



EarthWhere Product Overview

Jon Polay
VP, Business Development
703-462-1872
Jon.polay@spadac.com

The information contained in this document may be company sensitive and is intended for the recipient and SPADAC employees only. Any unauthorized use, dissemination of the information, or copying of this document is prohibited. If you are not the intended recipient, please destroy this document in its entirety.

Corporate Overview

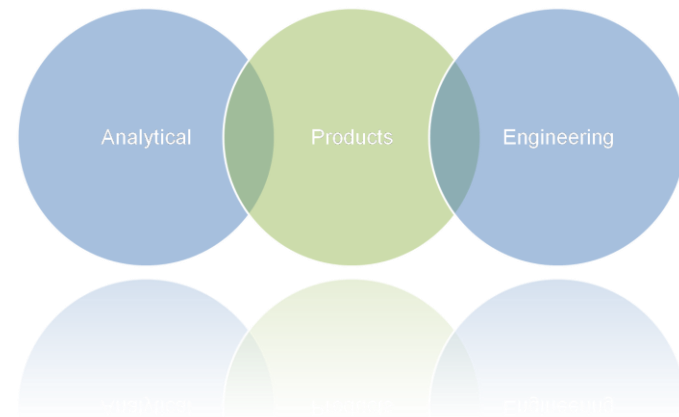
Mission:

To provide superior advanced geospatial intelligence services and solutions to Defense, Intelligence, Homeland Security, and Civilian Agencies.

Solutions:

We provide a wide range of products & services including:

- ***Geospatial Intelligence and All-Source Analysis***
- ***Predictive Analytics***
- ***Geospatial Content Management***
- ***Advanced Research & Development***



Geospatial Content Management

Context

- Geographic location is a key feature of 80-90% of all government data
- Federal Agencies are spending \$2.5 – \$3.0 billion annually on collection and management of geospatial data
- Up to 80% of the cost associated with a GIS is the development and maintenance of data
- The vast majority of analyst's time is spent looking for data
 - 80% of an analyst's time is spent looking for data and only 20% of their time analyzing this data



Our solutions help deal with these challenges by:

- Automatically cataloging geospatial assets
- Enable analyst to quickly find the data they need
- Reduce data acquisition and maintenance costs



What is EarthWhere?

EarthWhere is a web-based content management system used to catalog, provision, and disseminate geospatial data

Raster

Support for:

- 500+ projections/datums
- EO, IR, SAR, and MSI
- Digital Maps & Elevation Data
- Ortho-Rectification “on-the-fly”
- HDF, LIDAR

Vector

Support for:

- Numerous vector data formats
- GeoDatabase (Personal, ArcSDE)
- Clipping
- Re-Projection



Structured/Unstructured Text

Support for:

- HUMINT
- SIGINT
- Cultural Data
- Human Terrain

Full Motion Video

Support for:

- UAVs and other airborne assets
- Spatial and temporal clipping
- Ortho-mosaicking
- Tonal balancing

Dark Blue in Development

EarthWhere Customers

52 accounts across 20 different agencies

Defense & Intelligence



Federal Civilian

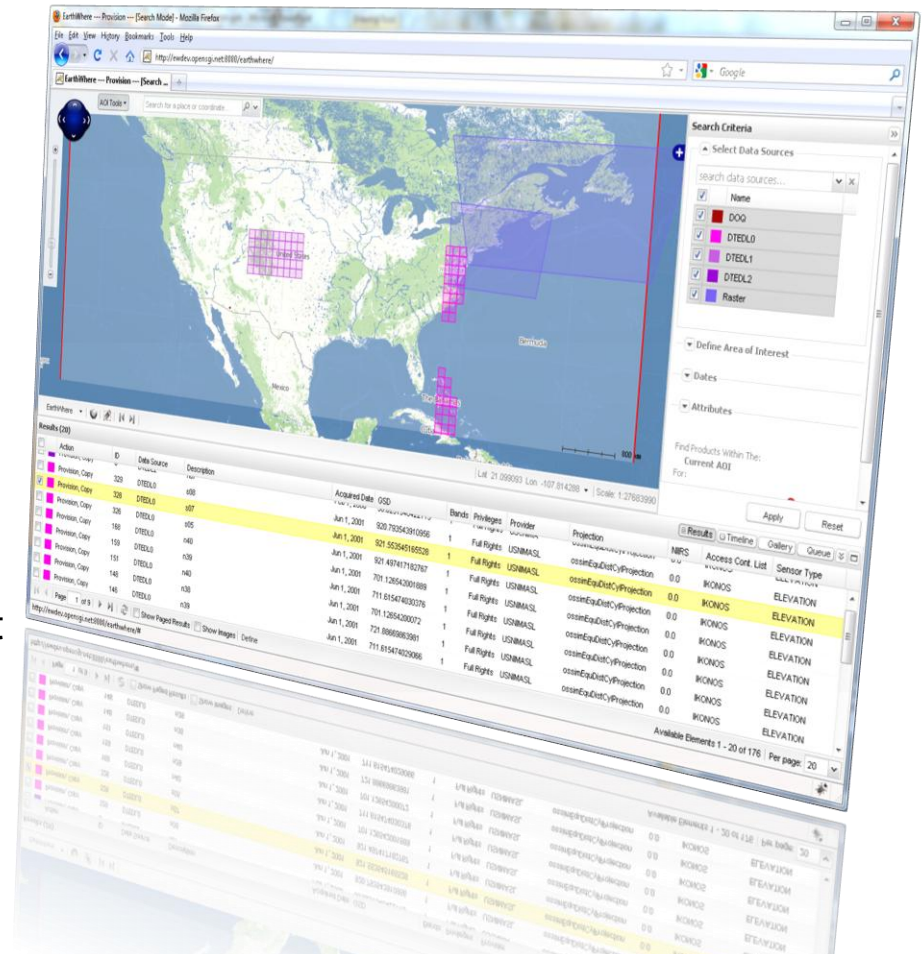


State & Local



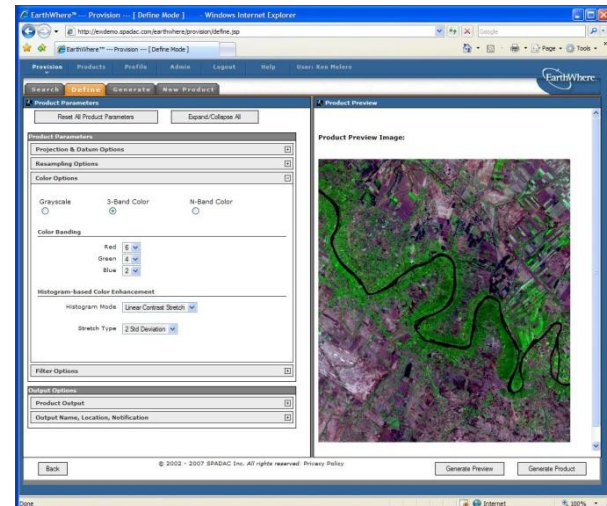
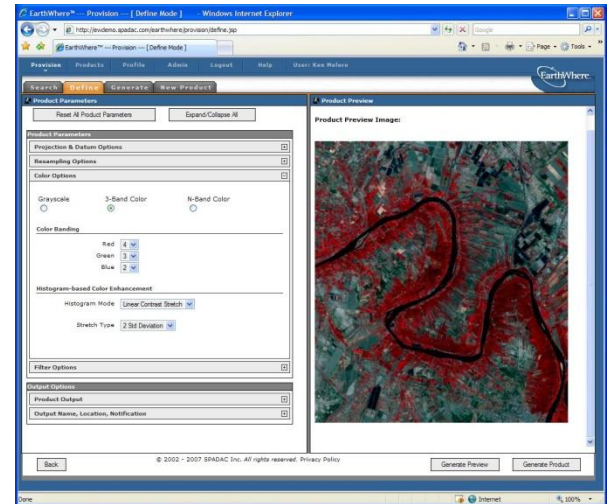
Key Features

- Automated cataloging of imagery, maps, terrain and vector data
- Fast, easy-to-use, search and retrieval
- Provision source data into derivative products on-the-fly
- Scalable and extensible Service Oriented Architecture (SOA)
- Distributed processing
- Role-based data level security
- LDAP and Active Directory Support
- OGC Compliant Web Services
- Proven and trusted solution throughout DOD and Civilian Federal agencies
- DODIIS Accredited



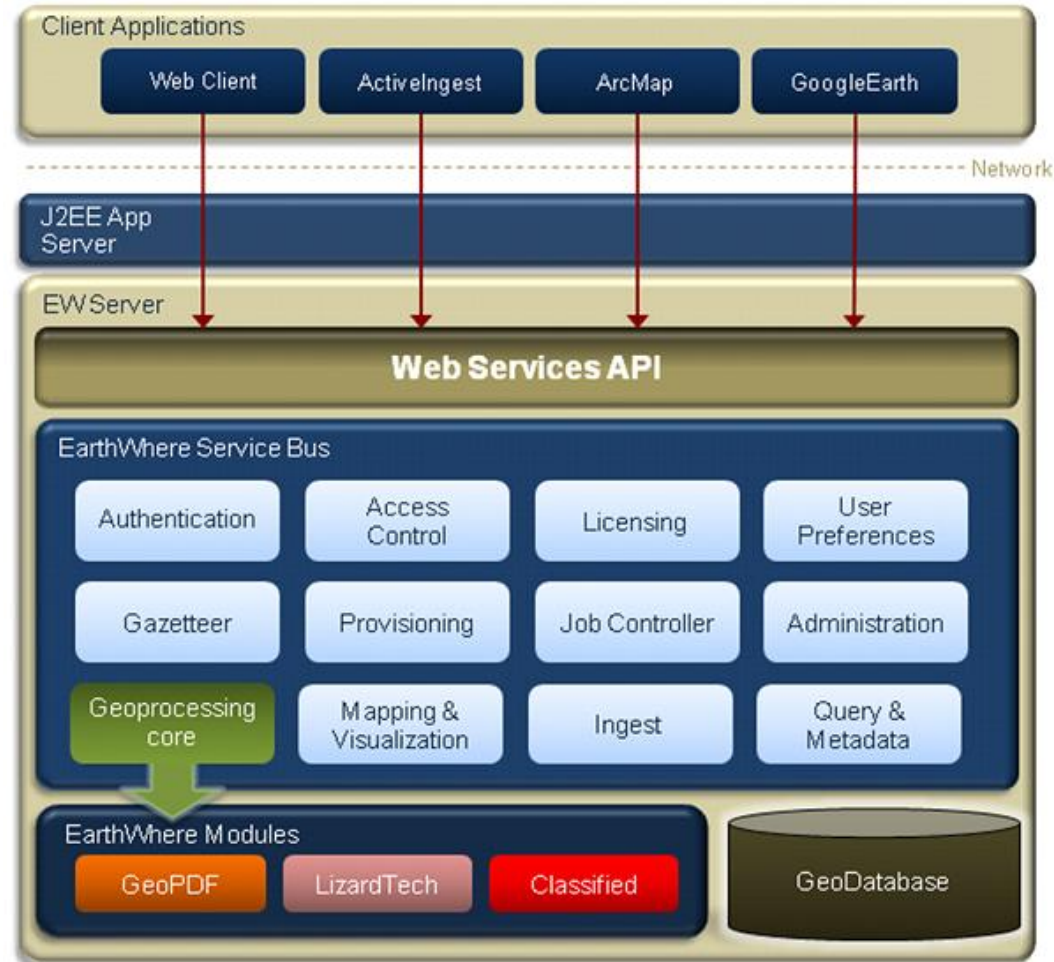
On-Demand Geospatial Processing

- Asynchronous Job Processing
- Optional Agent-based Processing
- Native Data Handling
- Optional Provision on Ingest
- Data Format Conversion
- Dynamic Reprojection and Datum Selection
- Resampling
- Orthorectification (Rigorous, RPC & Calibration)
- Terrain Correction (DTED or SRTM)
- Clipping/Subsetting
- Mosaicking Options (A over B, Seam Feathering, etc)
- Band Order and Manipulation
- Histogram Matching & Linear Stretching
- Hillshade and Color Relief



Enterprise Architecture

- Service Oriented
- Use of Open Source Technologies including:
 - OSSIM – Open Source Geospatial Image Processing
 - Postgresql/PostGIS
- Scalable
- Distributed
- Role-Based Access Control
- Active Directory Integration
- Support for 32 and 64 bit OS
- Extensible via Public API



HDF Data Capabilities



- Added ability to ingest HDF data
- Group subsets by:
 - Resolution/GSD
 - Geographic extents
 - Scalar Type
- Output Data:
 - Download source files
 - Clip
 - Reformat



Enhanced Cataloging and Provisioning

- Distributed agents
 - Massively parallel ingest and provisioning job processing
- Provision on Ingest
 - Format conversion on Ingest
 - Reproject on Ingest
- Advanced Staging Options
 - Organize data based on metadata attributes
- Enhanced Metadata Extraction





Demo

The information contained in this document may be company sensitive and is intended for the recipient and SPADAC employees only. Any unauthorized use, dissemination of the information, or copying of this document is prohibited. If you are not the intended recipient, please destroy this document in its entirety.



Questions?

Jon Polay
VP, Business Development
703-462-1872
Jon.polay@spadac.com

The information contained in this document may be company sensitive and is intended for the recipient and SPADAC employees only. Any unauthorized use, dissemination of the information, or copying of this document is prohibited. If you are not the intended recipient, please destroy this document in its entirety.